

PUT TOGETHER YOUR OWN C-SHUTTLE

1

STEP 1: CHOOSE YOUR BASE - "CORE"



C-Shuttle 150 core
3033015C(M)



C-Shuttle 250 core
3033025C(M)



C-Shuttle 250 core with platform for DB or TD
3033026C(M)



C-Shuttle 350 core
3033035C(M)

2

STEP 2: DECIDE WHERE YOU WANT TO PLACE PANELS AND DOORS



back panel
4801066(PL)



door right
4801068(PL)



door left
4801069(PL)

3

STEP 3: SET UP YOUR CLEANING TROLLEY

DRAWERS & BUCKETS



drawer - 40 l - black
45 x 29 x 33 cm
4801093



drawer - 20 l - black
45 x 29 x 16 cm
4801092



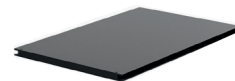
drawer - 10 l - black
45 x 29 x 8,5 cm
4801094



tray - black
50 x 19 x 16 cm
4801095



bucket - 7 l - red handle
4801077
bucket - 7 l - blue handle
4801078
bucket - 7 l - yellow handle
4801102

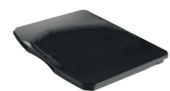


shelf
32 x 50 cm
4801073

LIDS



lid with transparant document holder
4801064



lid - black
4801063



lid with lock - black
4801106



plastic key
4801109



lid damper
4801065

BAGS



plastified bag - 50 l - grey
4801098



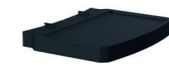
facility bag - 120 l - black
4801075



bag divider kit (5 pieces) - grey
4801079



bag divider 120 l kit (2 pieces) - grey
4801105



base bag holder
4801074



top bag holder - 120 l
4801062

HOOKS AND HOLDERS



hooks (for duster or safety sign)
4801084



handle holder - oval - to be fixed on the aluminium handle
4801099



handle holder
4801100



metal roll holder
4801111

4

STEP 4: ADD A MOP SYSTEM



metal press support
4801080



vertical press - black
4801081



bucket - 15 l - red handle
4801082



bucket - 15 l - blue handle
4801083



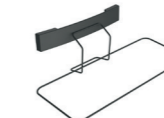
top-down bucket - 22 l
4801088



lid top-down bucket - 22 l
4801089



metal top-down bucket holder - upper position
4801090



metal top-down bucket holder - lower position
4801091



top-down bucket kit 2 x 22 l
4801107

ADDITIONAL OPTIONS UPON REQUEST



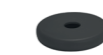
wheel with brake - 125 mm
4801108



outdoor wheel - 150 mm
4801110



metal wheel - 100 mm
4801103



wheel bumpers - 160 mm - grey
4801059



washer PP for metal wheel with bumper
4801104



linking kit to connect trolleys
4801101

READY TO ROLL!