



MANUAL C-SHUTTLE 350

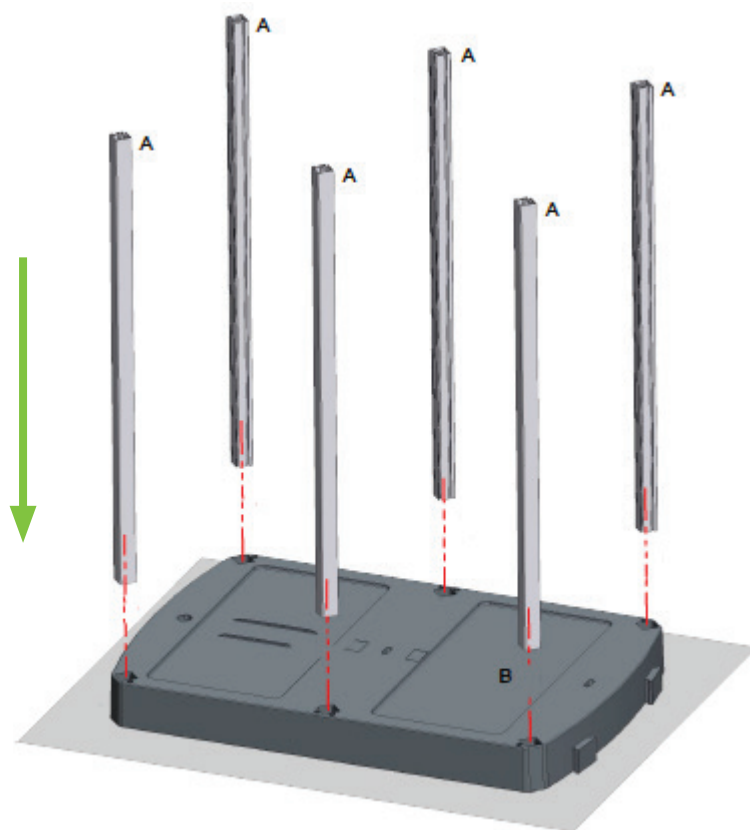
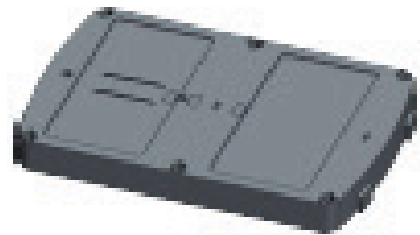

GREENSPEED™
crazy about cleaning

OVERVIEW





1.1 Place the bars in the base.

A**B**

- 1.2 Add the large grey parts on the side of the frame and screw the aluminium supports on the sides.

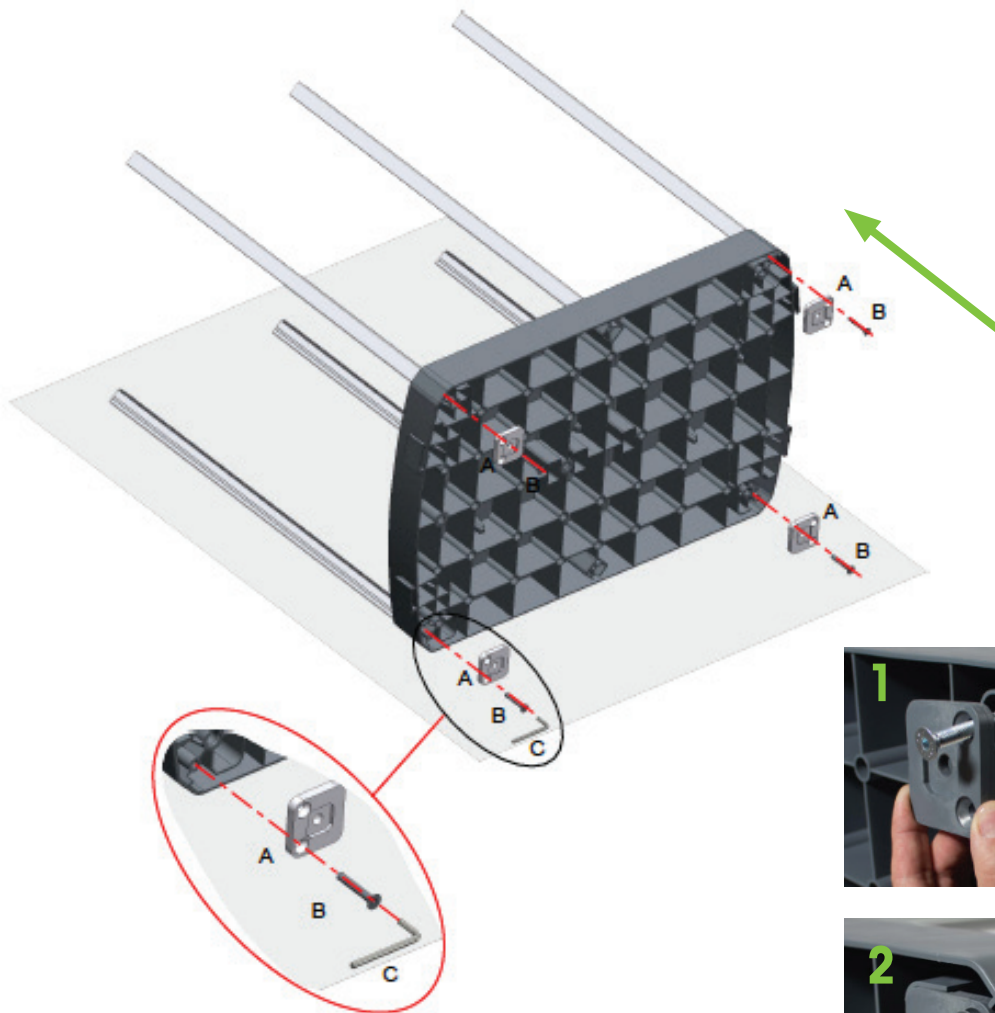
A



B



C



- 1.3 Add the small grey part on the base in the middle and screw the aluminium supports in the middle.

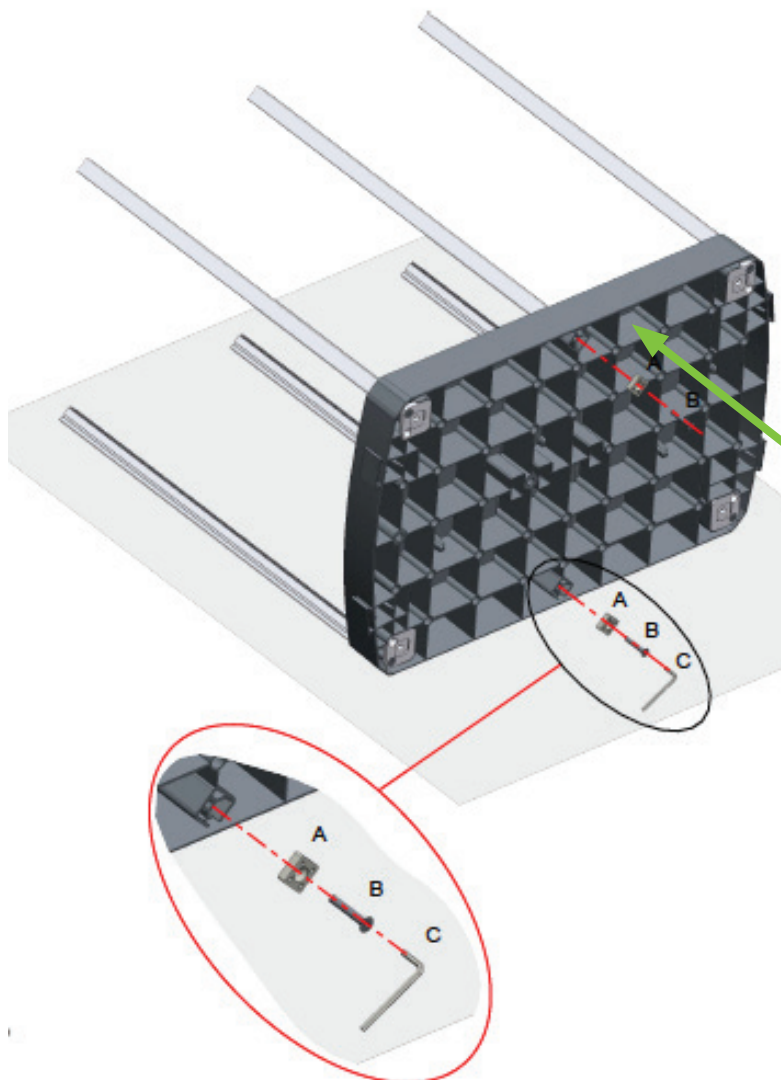
A



B

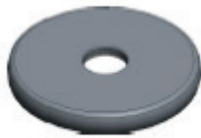


C



1.4 Wheels with bumper and washers.

A



B



C



D



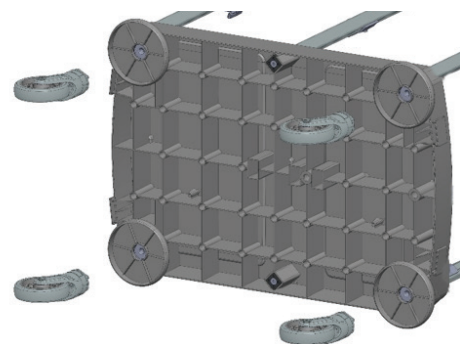
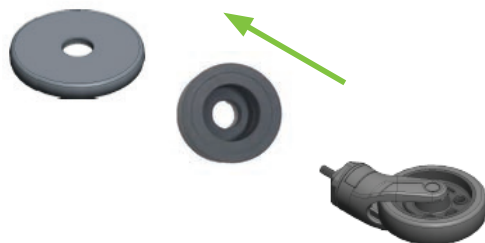
1

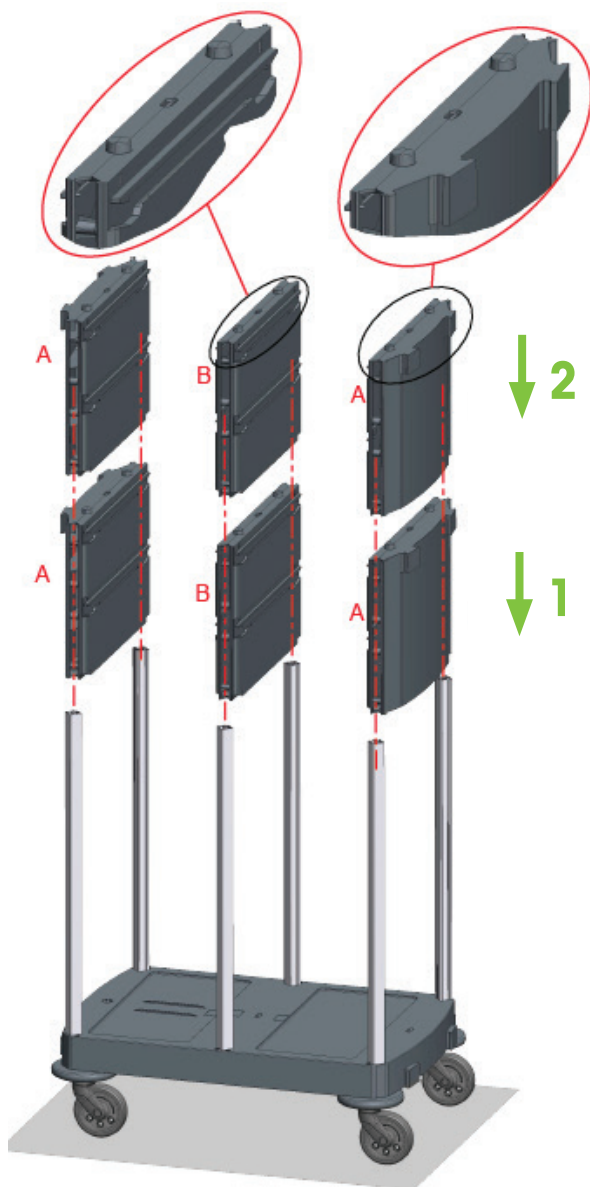
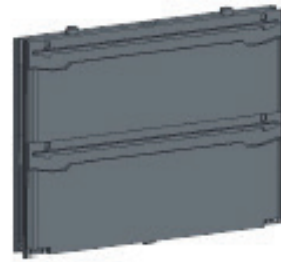


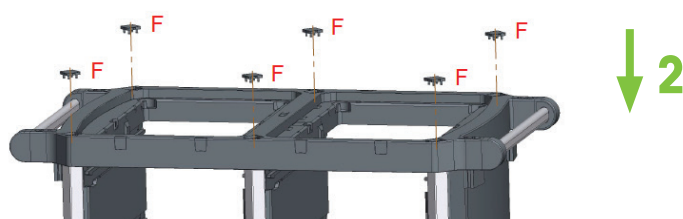
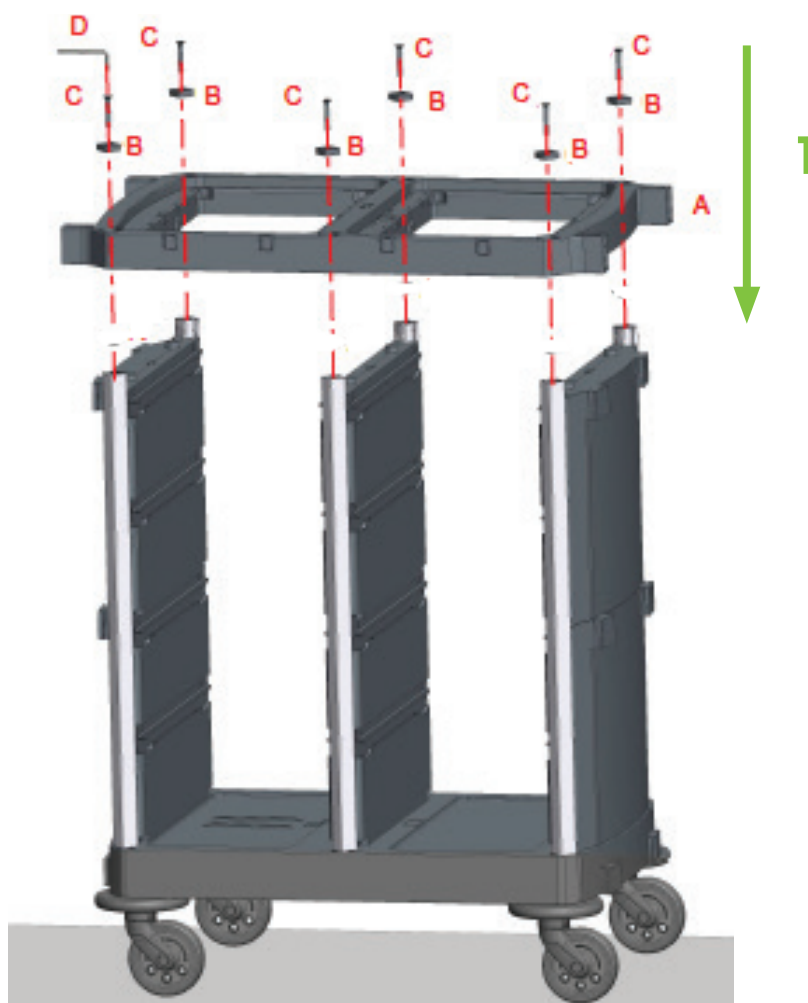
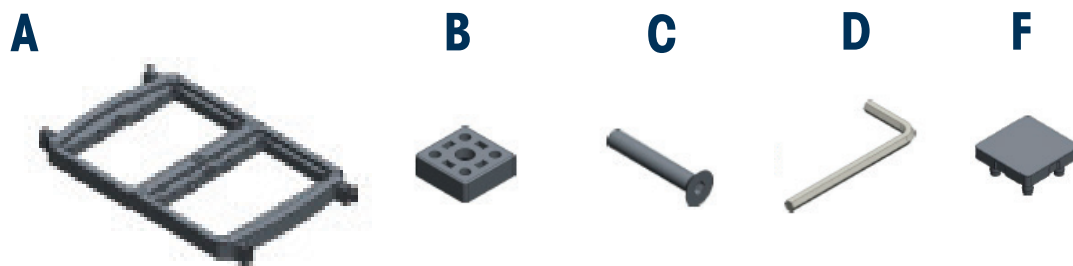
2



3



**A****B**

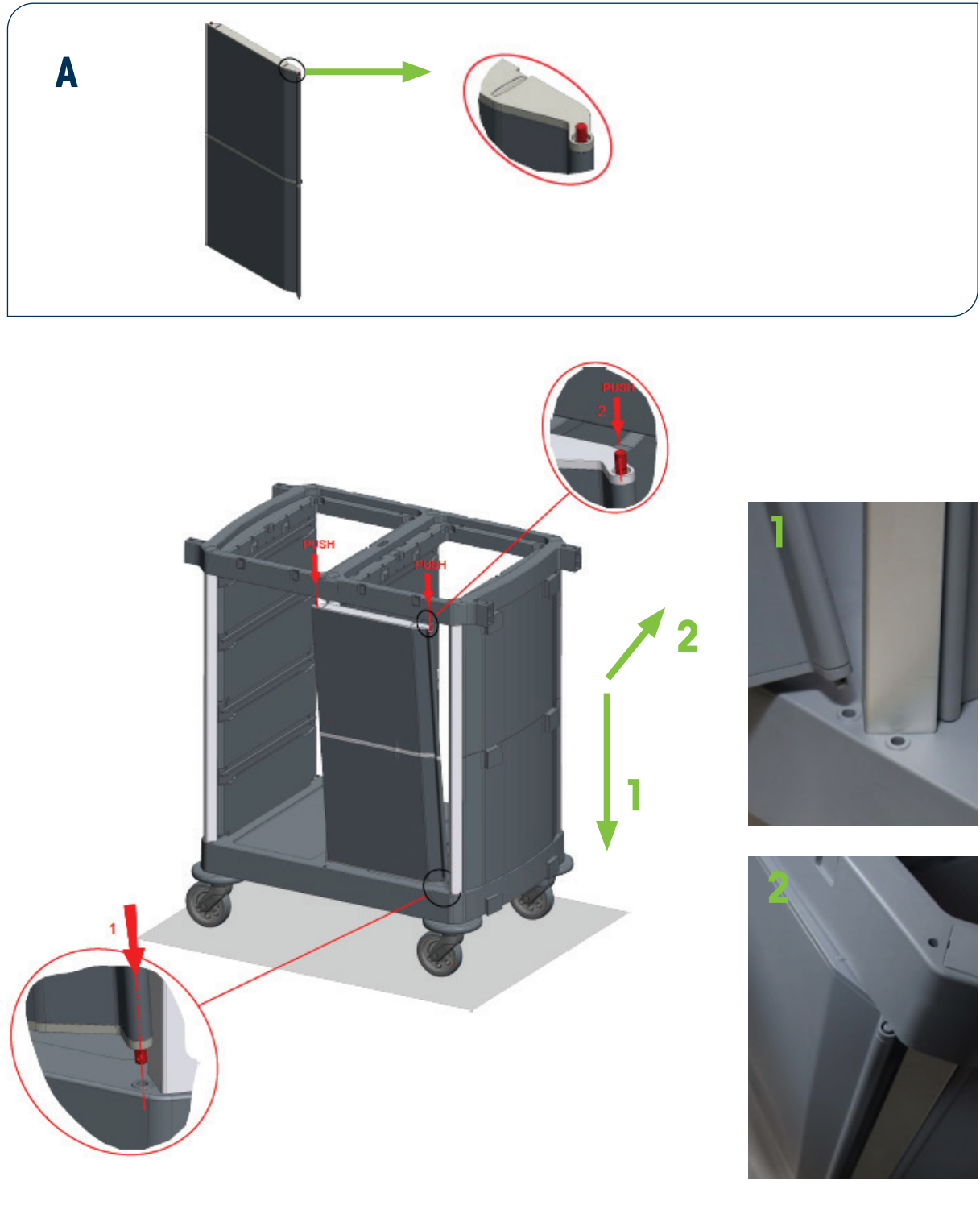


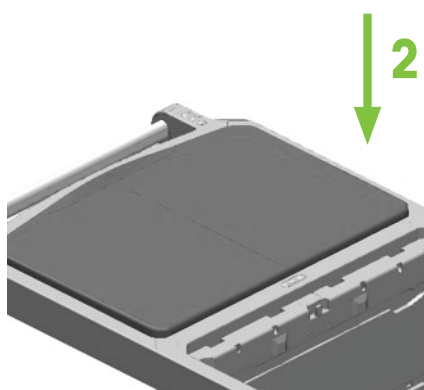
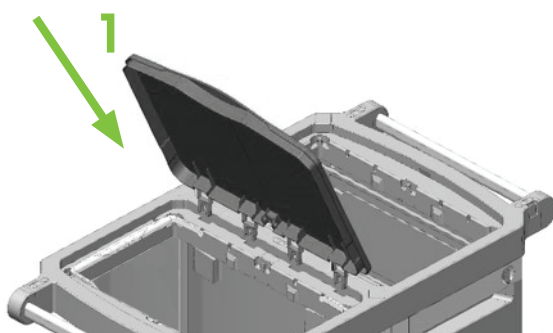
4

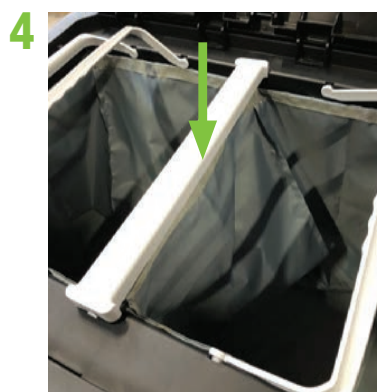
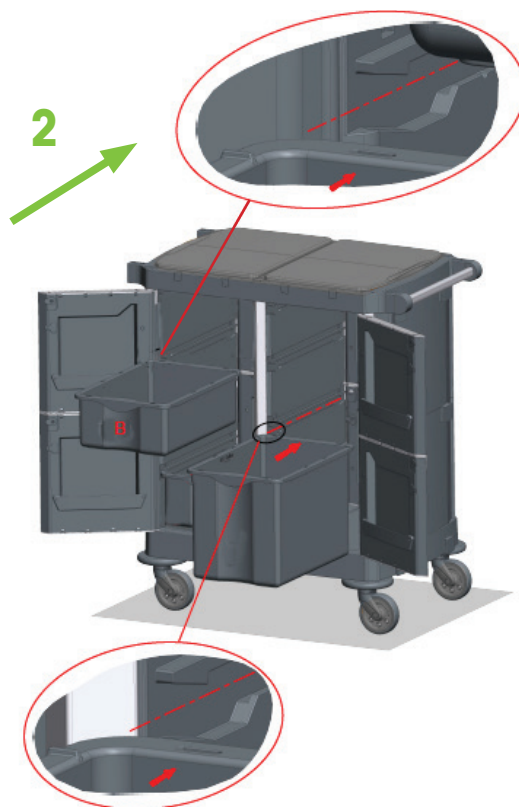
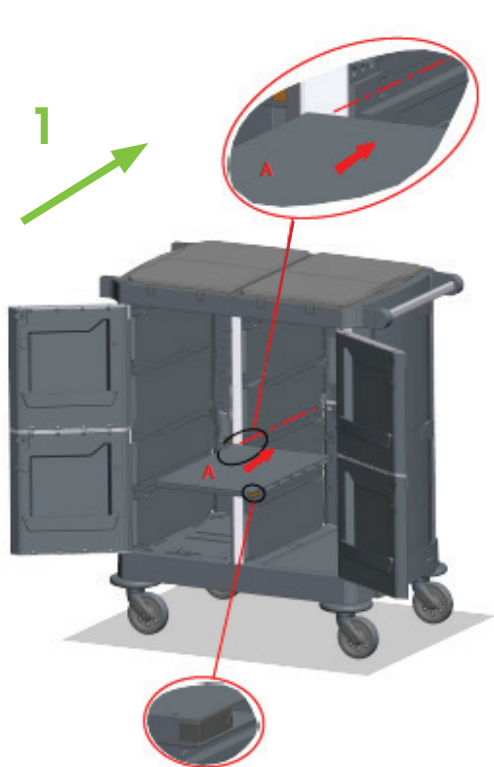
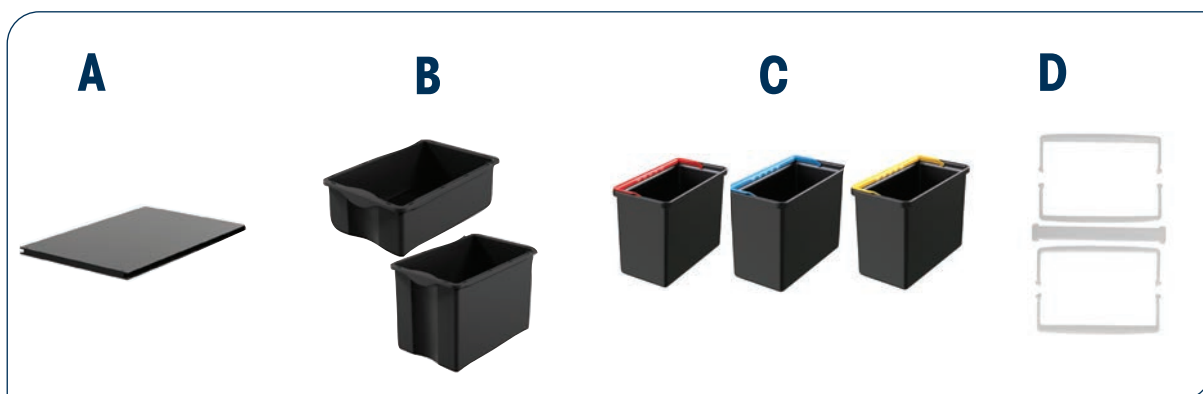
INSTALLATION OF CABINET'S BACK PANELS & DOORS

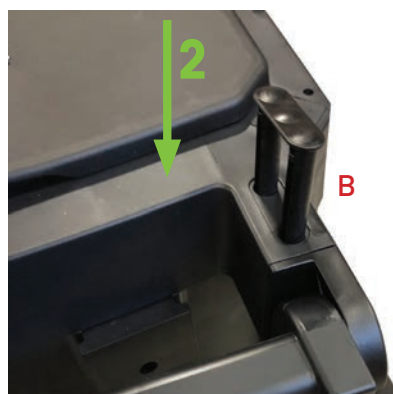
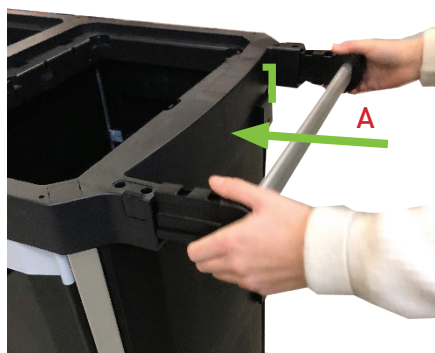


- 4.1 Align the hinge in the corresponding hole on the base.
- 4.2 Ligh the hinge with the hole under the top.



**A**



**A****B**



A



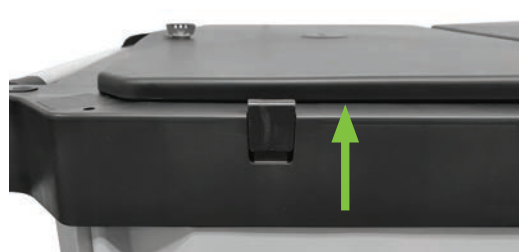
B



1



2



3



4





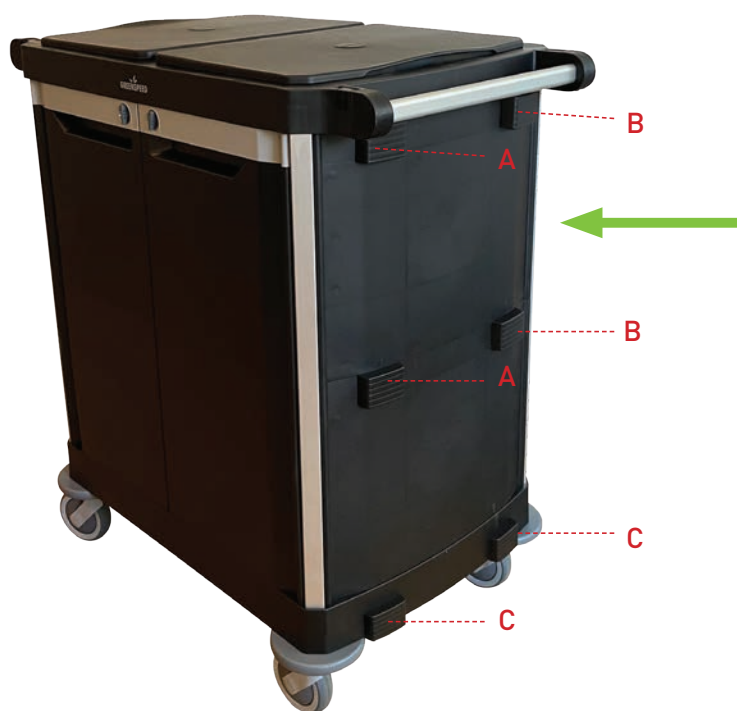
A

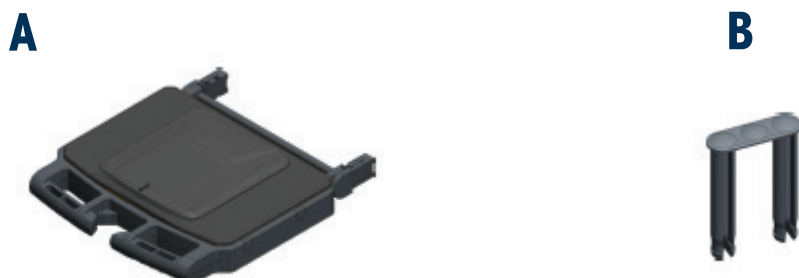
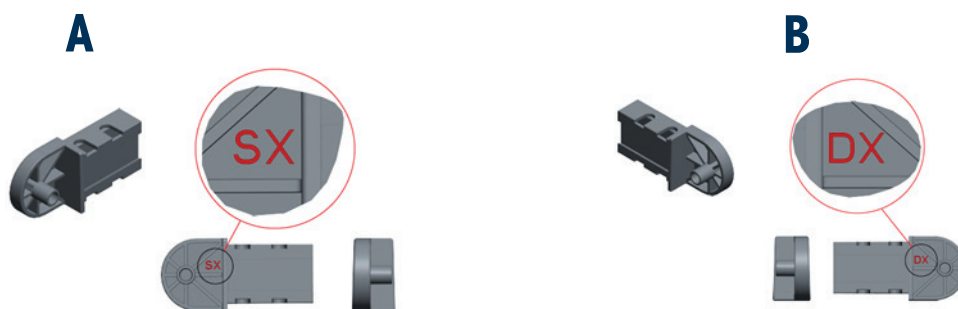


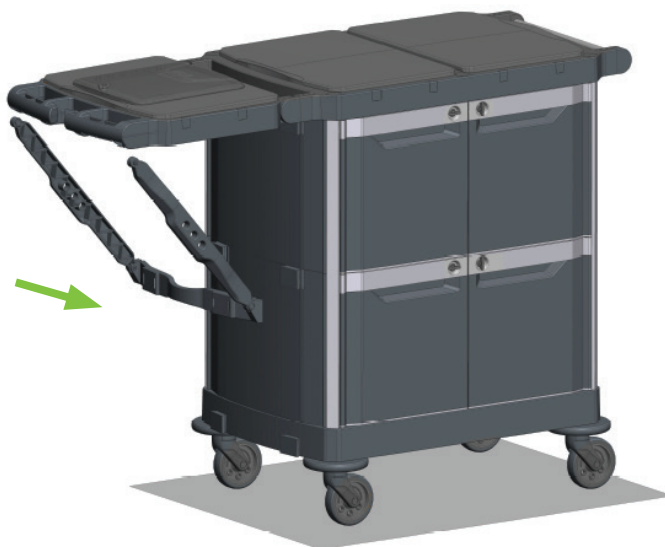
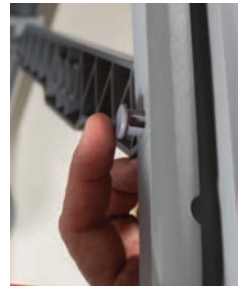
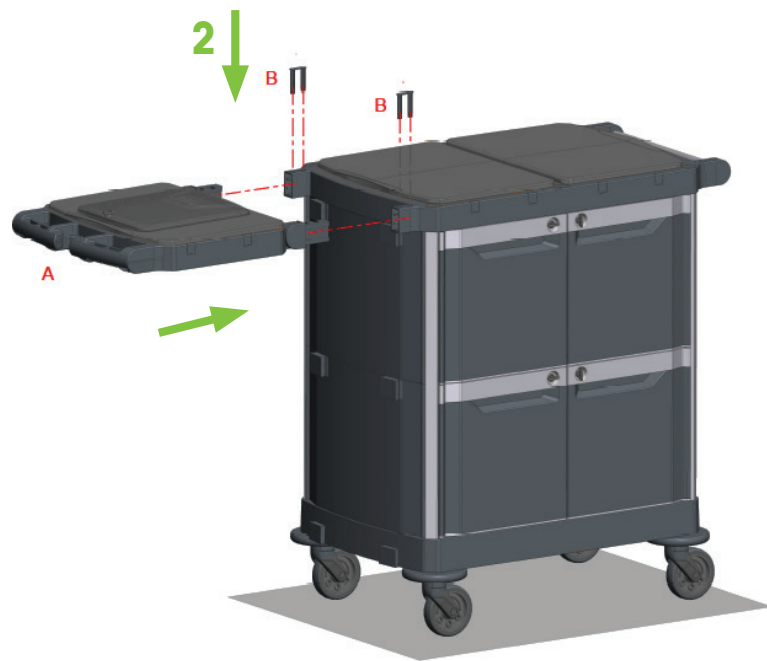
B



C

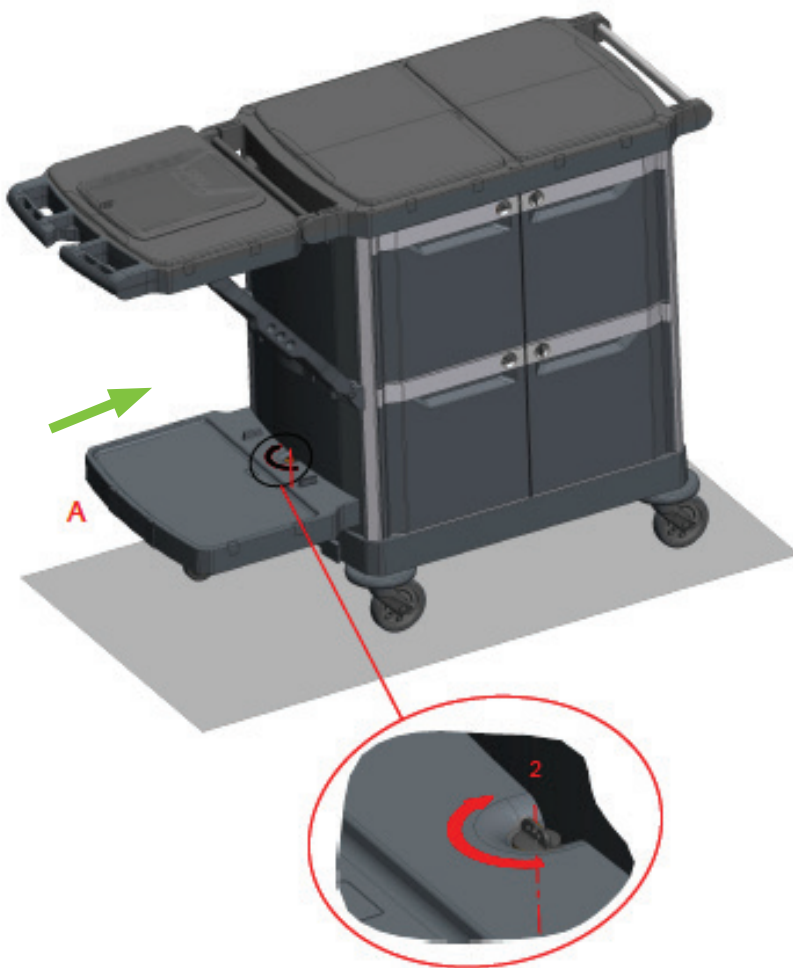
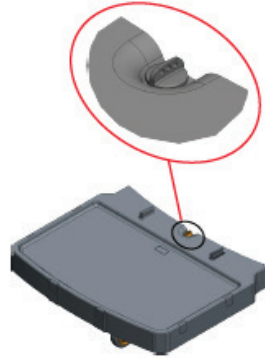








A



▼ **READY TO ROLL!**



CONTACT

T +31 (0)70 345 87 37
F +31 (0)70 345 89 42
greenspeed@greenspeed.eu

HOOFDKANTOOR

Greenspeed B.V.
Rotterdam Airportplein 24
3045 AP Rotterdam
Nederland

P.O.Box 1250
2280 CG Rijswijk
Nederland

www.greenspeed.eu

