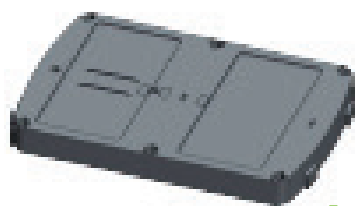




MANUAL C-SHUTTLE 250


GREENSPEED™
crazy about cleaning

OVERVIEW



x1



x4



x2

4801055



x6

4801071



x12



x2



x4

4801059



x4

4801104



x4

4801058



x2

4801072



x4

4801070



left: x1

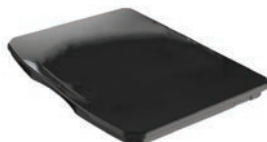
4801069

right: x1

4801068

back: x2

4801066



x2

4801063



left: x4

4801086

right: x4

4801085

base: x4

4801087



x2



x4

4801076



x1



x6



x6

4801061



x2

4801092



x1

4801077



x1

4801078



x1

4801102



x1

4801079



x2

4801100



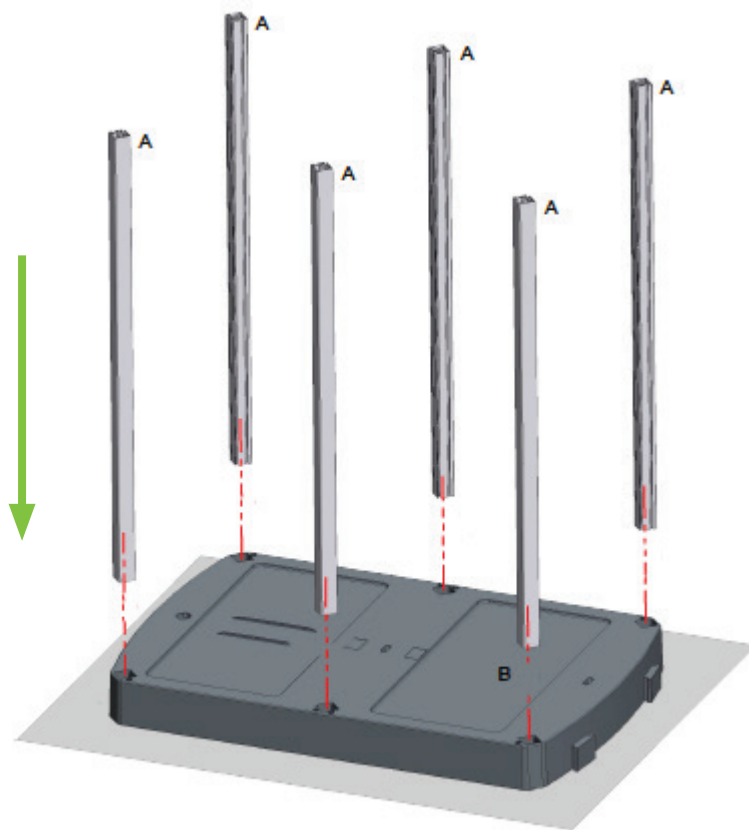
x1

4801084





1.1 Place the bars in the base.

A**B**

- 1.2 Add the large grey parts on the side of the frame and screw the aluminium supports on the sides.

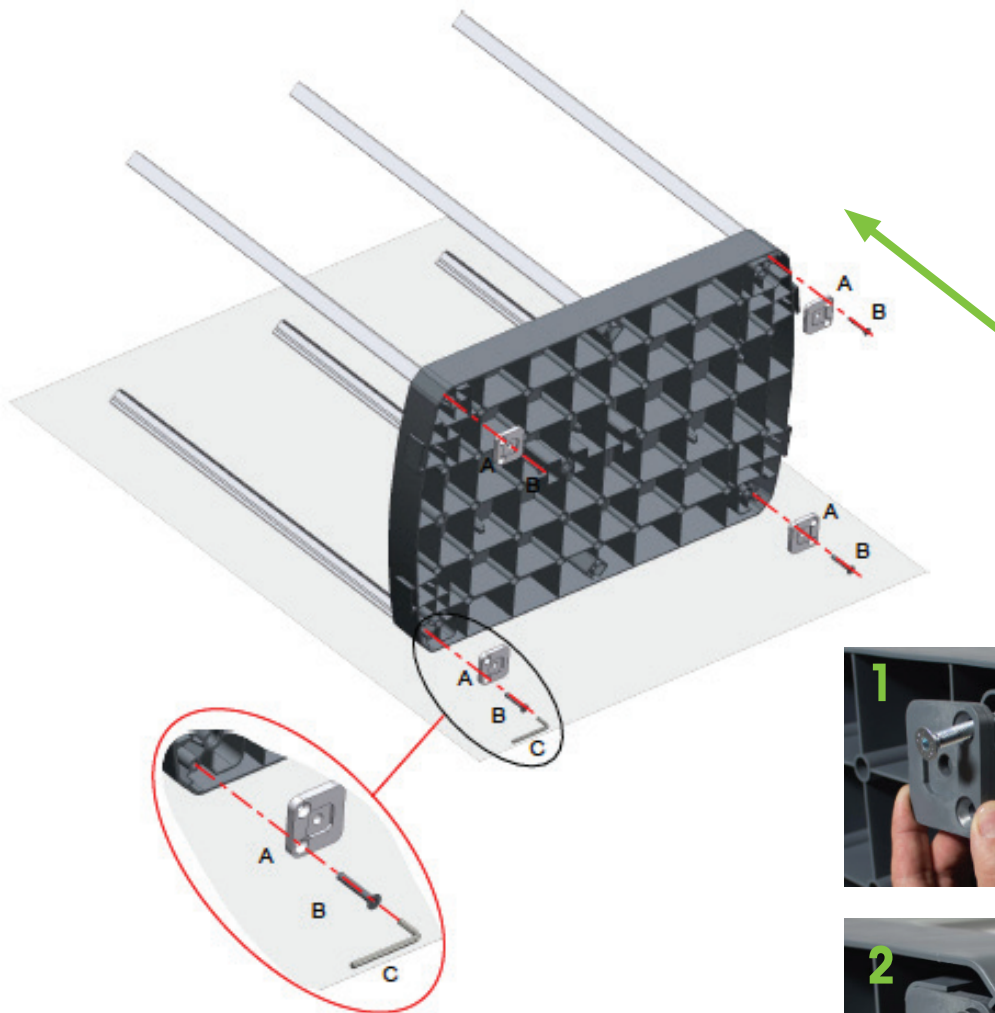
A



B



C



- 1.3 Add the small grey part on the base in the middle and screw the aluminium supports in the middle.

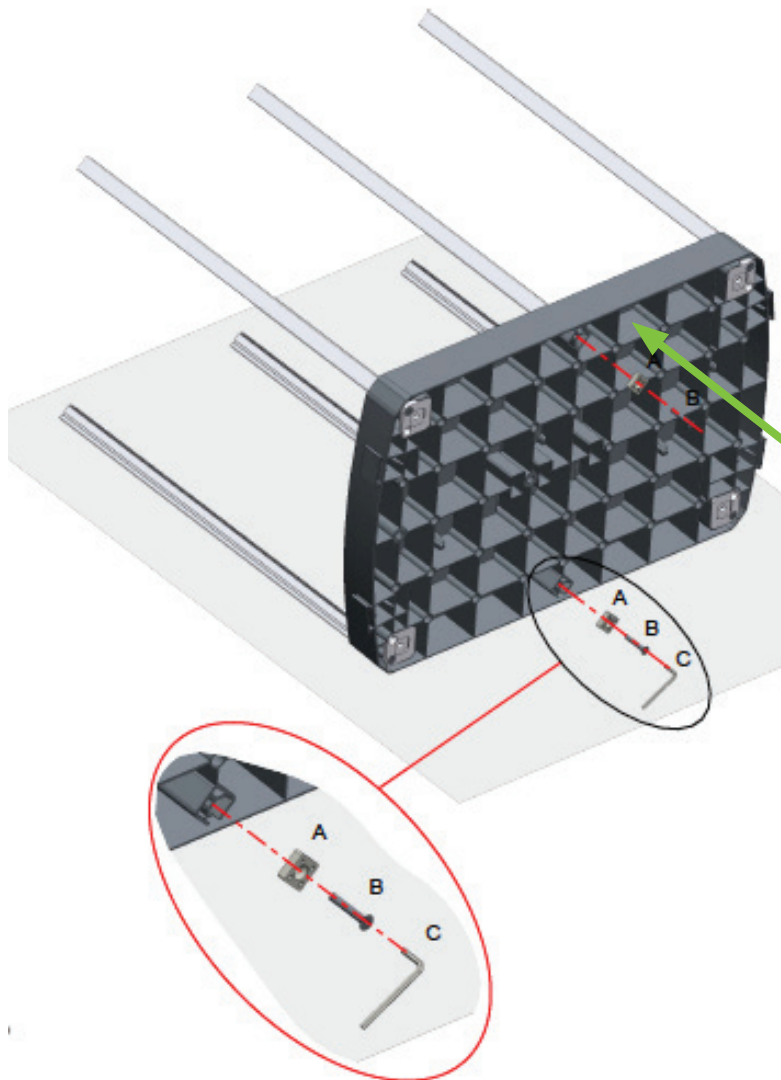
A



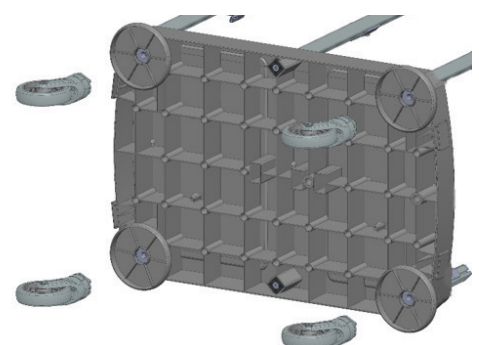
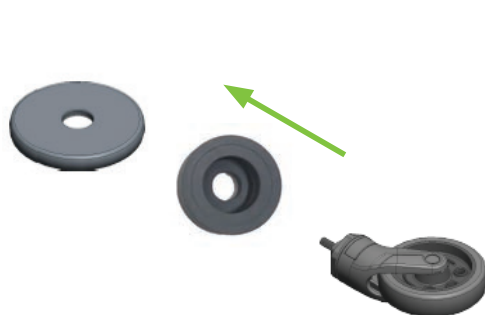
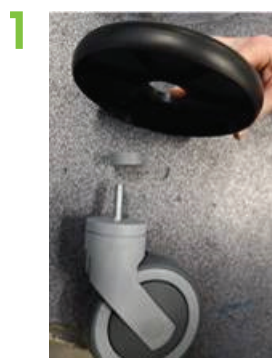
B



C



1.4 Wheels with bumper and washers.

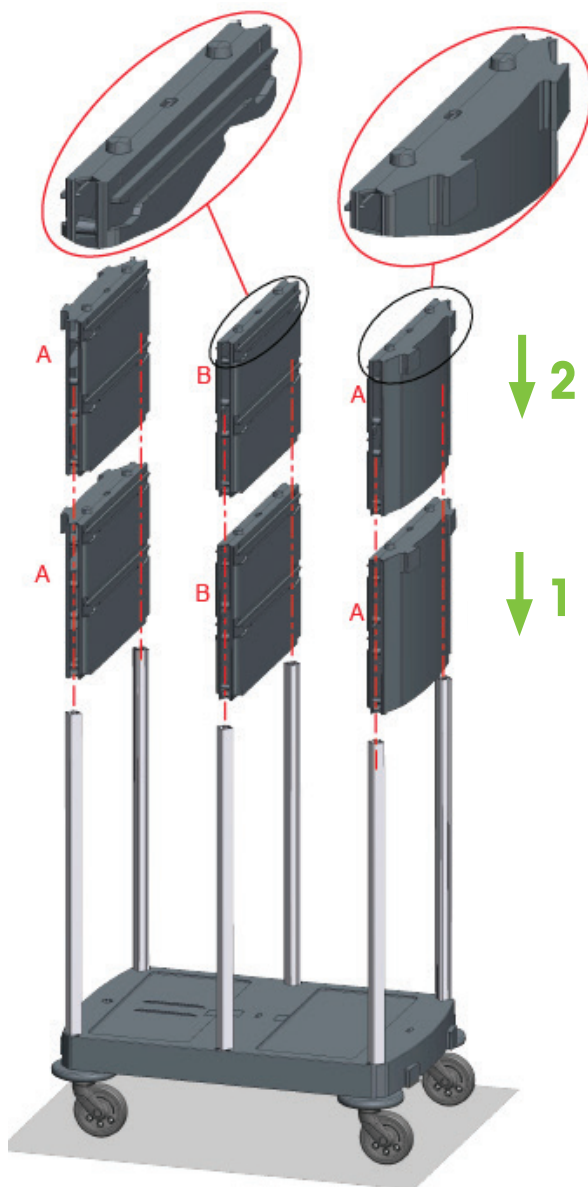
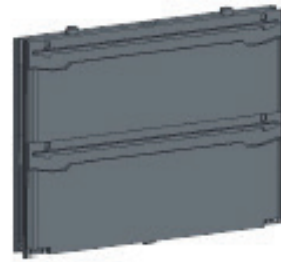


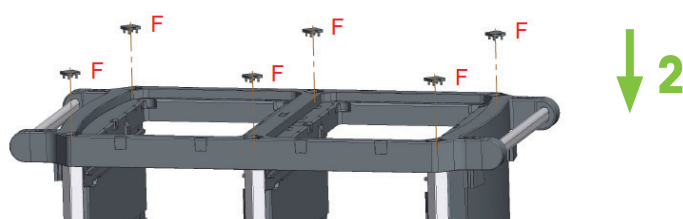
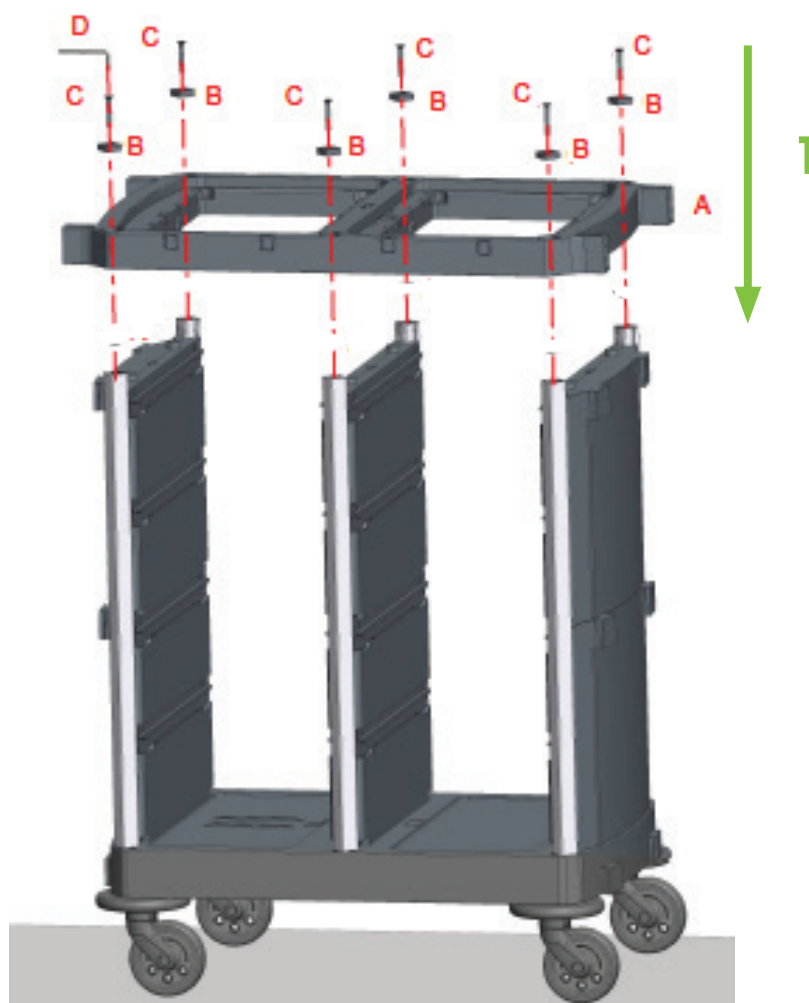
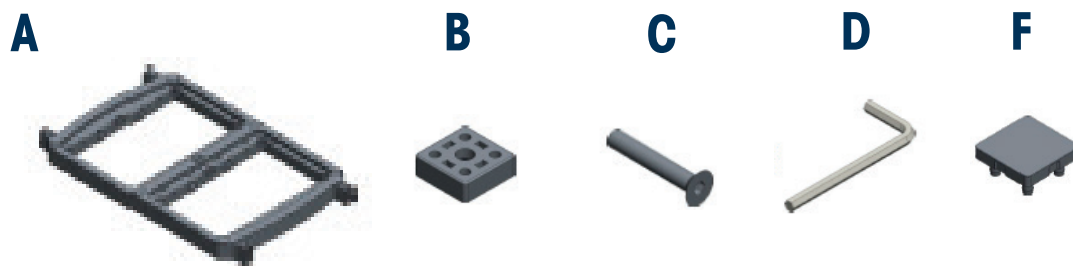


A



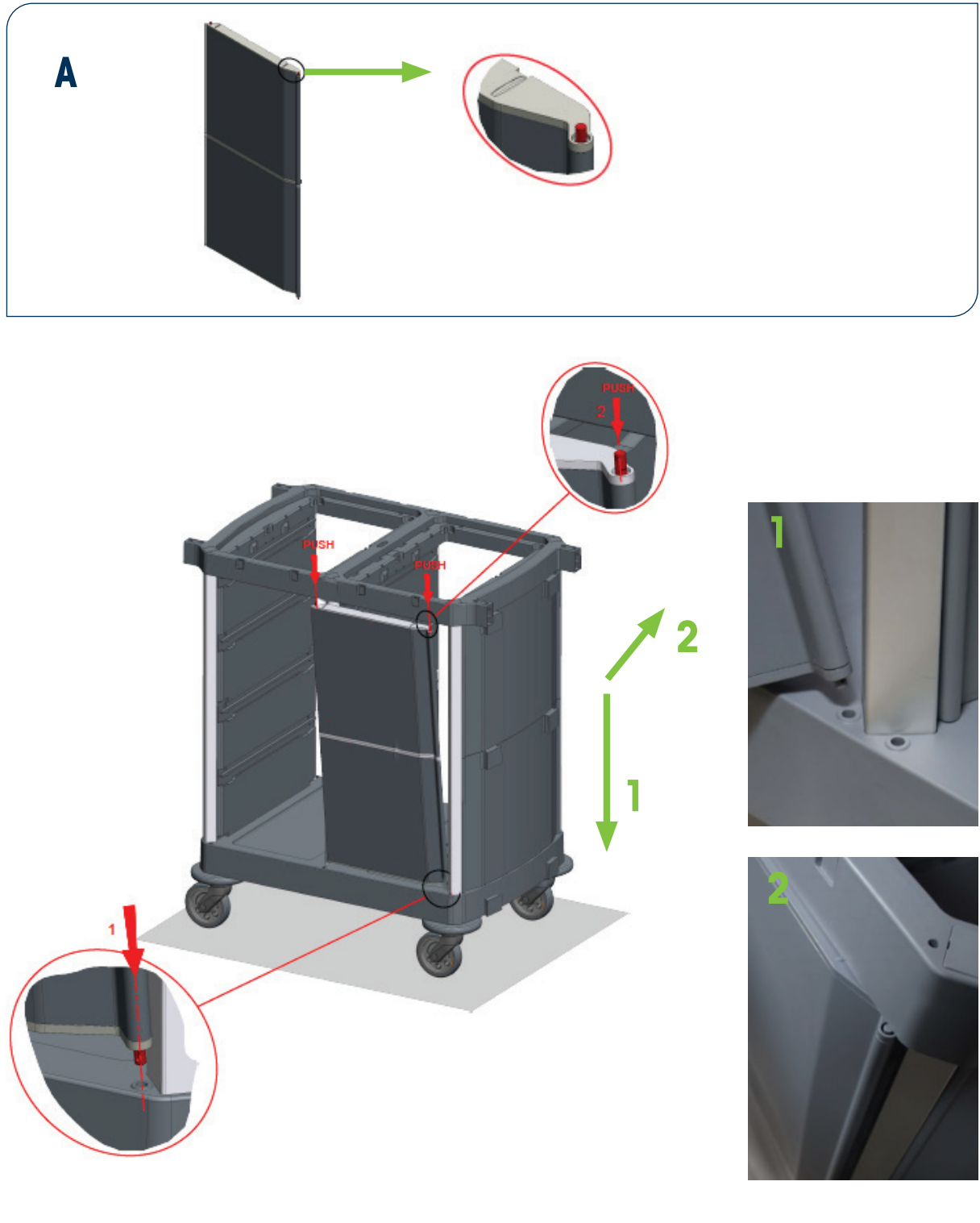
B

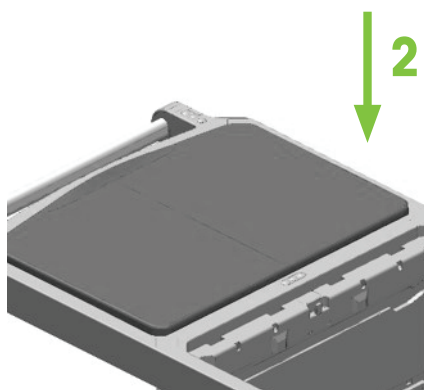
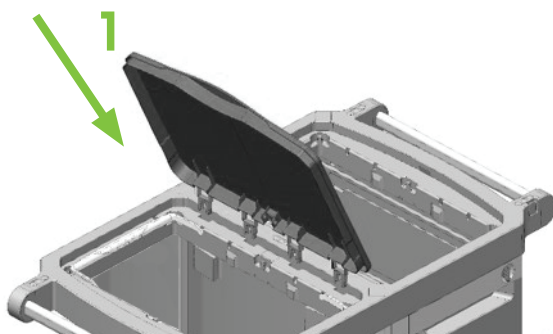
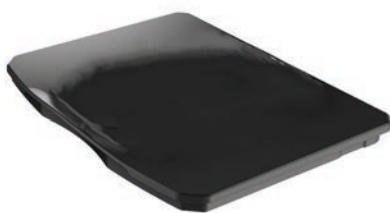






- 4.1 Align the hinge in the corresponding hole on the base.
- 4.2 Ligh the hinge with the hole under the top.



**A**



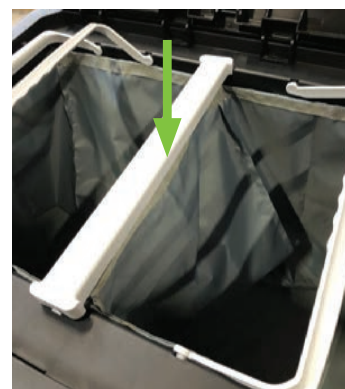
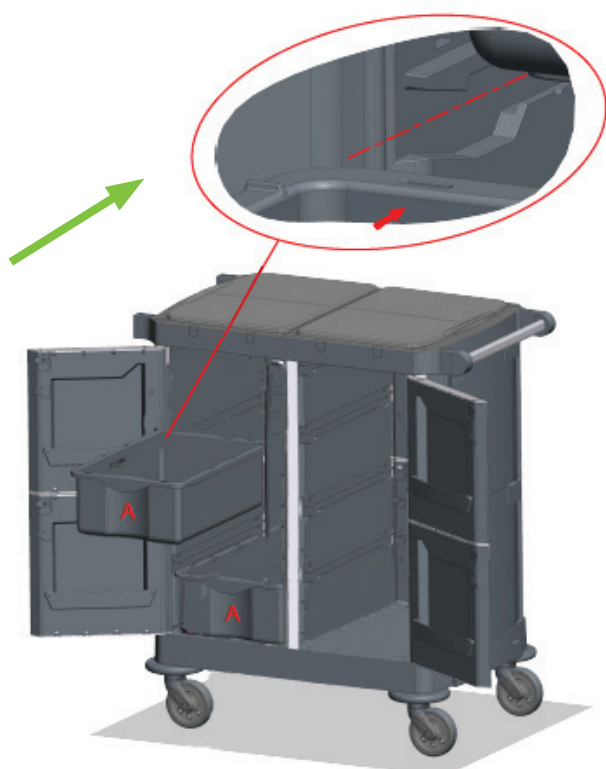
A

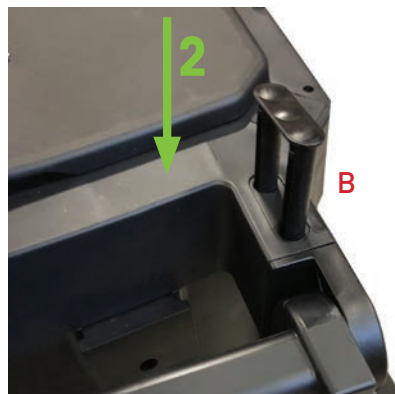
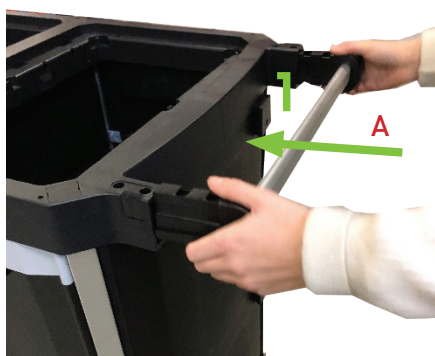


B



C



**A****B**



A



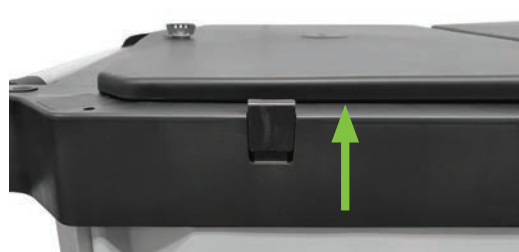
B



1



2

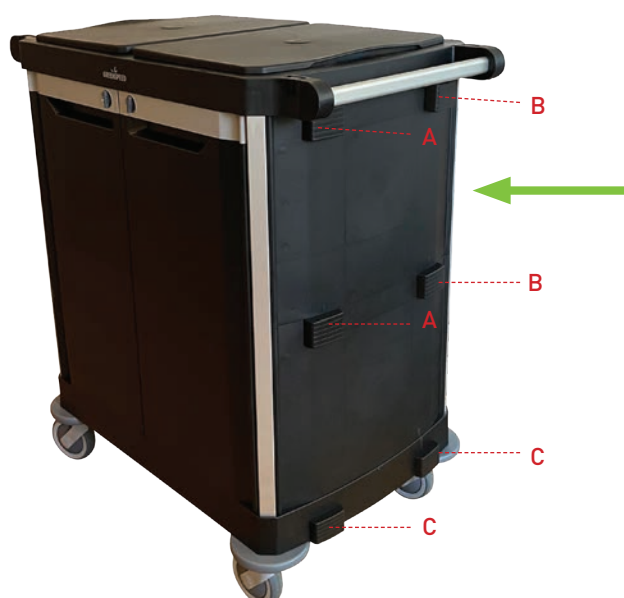


3



4



**A****B****C**

▼ **READY TO ROLL!**



CONTACT

T +31 (0)70 345 87 37
F +31 (0)70 345 89 42
greenspeed@greenspeed.eu

HOOFDKANTOOR

Greenspeed B.V.
Rotterdam Airportplein 24
3045 AP Rotterdam
Nederland

P.O.Box 1250
2280 CG Rijswijk
Nederland

www.greenspeed.eu

